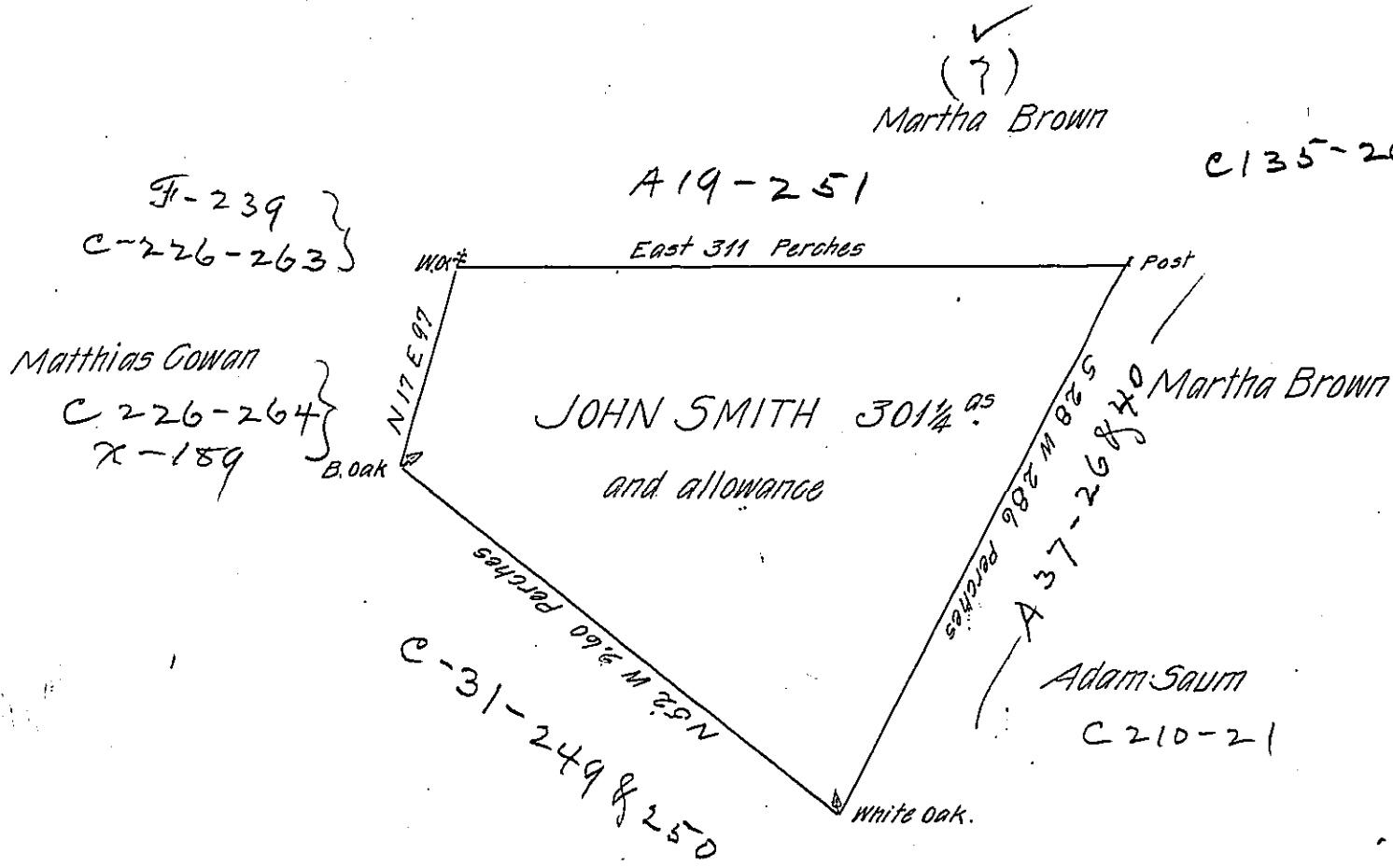


N. Huntingdon Tp. Bowd



In pursuance of an Order No 985 dated the 3<sup>d</sup> Day of April 1769 was Surveyed on the 5<sup>th</sup> Day of Oct<sup>r</sup> 1769 for John Smith the above described Tract of Land Situate on the Long Run Joining Martha Brown Adam Saum and others on the Southwest side of the Long ridge in Cumberland County Containing three hundred One Acres and a quarter of an Acre and the Allowance of Six Acres P. Cent for Roads & Ca.

P- W<sup>m</sup> Thompson DYS!

To John Lukens Esq<sup>r</sup> }  
Surveyor General

IN TESTIMONY that the above is a copy of the original remaining on file in the Department of Internal Affairs of Pennsylvania, made conformably to an Act of Assembly approved the 16th day of February, 1833, I have hereunto set my Hand and caused the Seal of said Department to be affixed at Harrisburg, this twentysecond day of November 1905.

*Loa D Brown*  
Secretary of Internal Affairs.